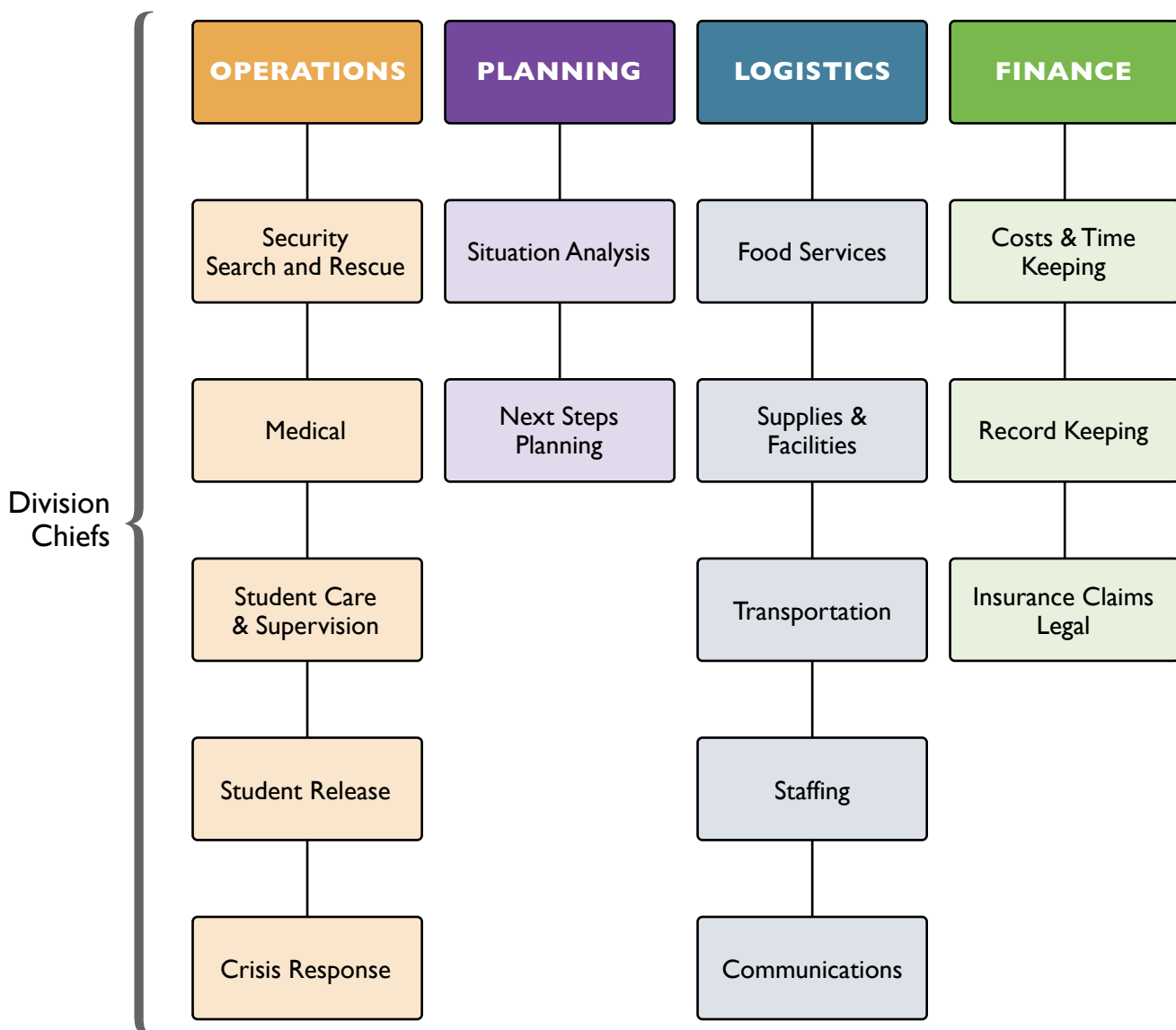
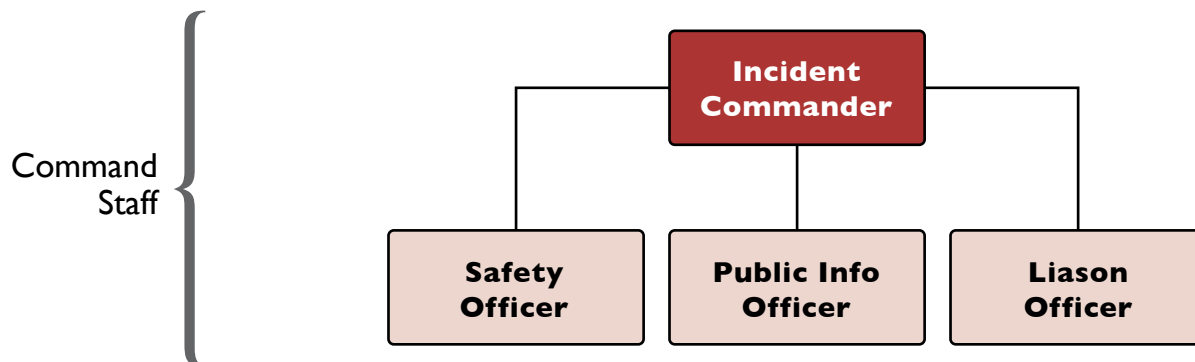


SCHOOL INCIDENT COMMAND CHART



SCHOOL INCIDENT COMMAND FORM

THREE-DEEP ASSIGNMENTS

Refer to the chart on the preceding page and choose three qualified delegates for each position. In the event the first individual is not available during an emergency, the responsibility will fall to the second person listed. If the second person is also unavailable, the third will fill the role. An individual may be listed more than once, but within reasonable limits.

COMMAND STAFF

Incident Commander:	<input type="text"/>	<input type="text"/>	<input type="text"/>
Safety Officer:	<input type="text"/>	<input type="text"/>	<input type="text"/>
Public Information Officer:	<input type="text"/>	<input type="text"/>	<input type="text"/>
Liason Officer:	<input type="text"/>	<input type="text"/>	<input type="text"/>

OPERATIONS

Security/Search and Rescue:	<input type="text"/>	<input type="text"/>	<input type="text"/>
Medical:	<input type="text"/>	<input type="text"/>	<input type="text"/>
Student Care & Supervision:	<input type="text"/>	<input type="text"/>	<input type="text"/>
Student Release:	<input type="text"/>	<input type="text"/>	<input type="text"/>
Crisis Response:	<input type="text"/>	<input type="text"/>	<input type="text"/>

SCHOOL INCIDENT COMMAND FORM

PLANNING

Situation Analysis:	<input type="text"/>	<input type="text"/>	<input type="text"/>
Next Steps Planning	<input type="text"/>	<input type="text"/>	<input type="text"/>

LOGISTICS

Food Services	<input type="text"/>	<input type="text"/>	<input type="text"/>
Supplies & Facilities	<input type="text"/>	<input type="text"/>	<input type="text"/>
Transportation	<input type="text"/>	<input type="text"/>	<input type="text"/>
Staffing	<input type="text"/>	<input type="text"/>	<input type="text"/>
Communications	<input type="text"/>	<input type="text"/>	<input type="text"/>

FINANCE

Costs & Time Keeping	<input type="text"/>	<input type="text"/>	<input type="text"/>
Record Keeping	<input type="text"/>	<input type="text"/>	<input type="text"/>
Insurance Claims/Legal	<input type="text"/>	<input type="text"/>	<input type="text"/>