



THE Big Five

School Administrator Packet • 2021-22

Immediate Action Emergency
Response for Schools



STEERING COMMITTEE

COALITION FOR SAFE SCHOOLS AND COMMUNITIES STEERING COMMITTEE

AGENCY/DISTRICT	REPRESENTATIVE	POSITION/TITLE
Police Chiefs and Sheriff Association	Ed Barberini	Chief, San Mateo Police Department
San Mateo Consolidated Fire	Bill Euchner	Battalion Chief
San Mateo County Behavioral Health and Recovery Services	Ziomara Ochoa	Deputy Director
San Mateo County Board of Supervisors	Lena Silberman	Legislative Aid, Don Horsley
San Mateo County Board of Supervisors	Ann Keighran	Legislative Aid, David Canepa
San Mateo County Community College District	Brian Tupper	Captain, Public Safety
San Mateo County Counsel	Claire Cunningham	Chief Deputy County Counsel
San Mateo County Human Services Agency	John Fong	Director, Children and Family Services
San Mateo County Human Services Agency	Trisha Howard	Emergency Response Manager
San Mateo County Office of Education	Nancy Magee	County Superintendent
San Mateo County Office of Education	Jeneé Littrell	Deputy Superintendent, Educational Services
San Mateo County Office of Education	Mary McGrath	Executive Director, Safe and Supportive Schools
San Mateo County Office of Education	Patricia Love	Executive Director, Strategy and Communications
San Mateo County Office of Education	Molly Henricks	Coordinator, School Safety and Risk Prevention
San Mateo County Probation	Michelle Kozul	Director, Juvenile Division
San Mateo County Schools Insurance Group	Tom Ledda	Senior Loss Control Analyst
San Mateo County Sheriff	Scott Grosso	Sergeant
San Mateo County Superintendents Association	Beth Polito	Superintendent, Las Lomitas Elementary School District
SMUHSD, 9-12 School Districts Services	Don Scatena	Director of Student Services
SUHSD, 9-12 School Districts Services	Jarrett Dooley	Director of Student Services

FOREWORD

With 23 school districts and 20 law enforcement agencies across San Mateo County, it is essential to share common language and clear understandings of emergency response for our schools and communities. San Mateo County's Big Five protocols provide this shared understanding and have become the cornerstone of emergency response for 90,000+ students in public and private school.

Developed in 2014 after a year-long stakeholder engagement process involving experts from education, law enforcement, fire, public health, government, and the community at large, the Big Five provides five immediate action responses for any emergency. These include Shelter in Place; Drop, Cover, and Hold On; Secure Campus; Lockdown/Barricade; and Evacuation.

The Big Five is under constant review by the Coalition for Safe Schools and Communities Steering Committee. The Steering Committee not only meets monthly, but also analyzes emerging challenges and makes recommendations.

Best practices for safe school conditions within the context of COVID-19 are woven into this 2021-2022 Big Five edition to further ensure health and safety for students and staff during drills and other emergency procedures. However, schools should prioritize safety during an emergency.

In addition to the Big Five, the Coalition for Safe Schools and Communities' portfolio includes the following countywide protocols: *Student Threat Assessment*, *Suicide Prevention Toolkit*, *Child Sexual Abuse Protocol*, and *CSEC and Human Trafficking Protocol for Educators*.

Through collaboration with many committed county partners, the Coalition for Safe Schools and Communities continues to fulfill its vision to create and sustain safe and positive school and community environments so all youth may thrive and succeed.

TABLE OF CONTENTS

TABLE OF CONTENTS

SAN MATEO COUNTY COALITION FOR SAFE SCHOOLS AND COMMUNITIES: STEERING COMMITTEE	ii
FOREWORD	iii
TRAUMA-INFORMED APPROACH	1
DISASTER SERVICE WORKER	3
CALLING 911	4
POWER OUTAGES DURING COVID-19	5
DRILLS AND EXERCISES	6
THINK ON YOUR FEET	8
IMMEDIATE ACTION RESPONSE - THE BIG FIVE	9
EMERGENCY RESPONSE BOX	10
■ SHELTER IN PLACE	11
■ DROP, COVER, AND HOLD ON	15
■ SECURE CAMPUS	19
■ LOCKDOWN / BARRICADE	23
■ EVACUATION	31
FIRST AID: TRIAGE	35
SCHOOL INCIDENT COMMAND CHART	37
SCHOOL INCIDENT COMMAND FORM	38
GO BAG	40
BUDDY TEACHER LIST	41
THE BIG FIVE SUPPLEMENTAL RESOURCES	42

TRAUMA-INFORMED APPROACH

To minimize the negative mental health impacts on students, employ a trauma-informed approach when practicing and implementing the Big Five protocols. The following table provides grade-appropriate guidance for supporting students during the preparation, response, and recovery phases of an emergency. Specific recommendations for planning and implementing trauma-informed drills can be found on page 6.

	Preparedness	Response	Recovery
All Grades	<p>Staff: Train all staff on procedures Use the word “safety” when conducting drills</p> <p>Students: Practice grounding and calming skills with students</p> <p>Parents/Guardians: Educate parents on protocols Inform parents prior to drills</p>	<p>Staff: Remain calm Know the students will take their cues from adults</p> <p>Students: Have students use calming skills and exercises</p> <p>Parents/Guardians: Notify parents as soon as it is safe regarding the situation or when the drill has concluded</p>	<p>Get the class engaged in a movement activity</p> <p>Notice students experiencing anxiety/fear and inform counselors or parents</p>
<p>Pre-K to Kinder</p> <p><i>Developmental Considerations:</i> Students require adult guidance to determine what action to take Engage in social stories with students instead of simulated drills No prior knowledge of the Big Five or emergency response actions</p>	<p>Students: Use Big Five posters as a visual tool Use Big Five books to help students prepare for what to expect</p>	<p>Staff: Act with confidence Use age-appropriate language</p> <p>Students: Have students hold a calming item (stuffed animal, book, small toy)</p>	<p>Praise students for what they did well during the drill</p>

TRAUMA-INFORMED APPROACH

	Preparedness	Response	Recovery
<p>1st Grade to 4th Grade</p> <p><i>Developmental Considerations:</i> Students can understand safety directions and instructions Students are capable of understanding purpose of safety drills Engage in social stories with students instead of simulated drills</p>	<p>Students: Use Big Five posters as a visual tool Use Big Five books and curriculum to help students prepare and learn</p> <p>Parents/Guardians: Encourage families to discuss the Big Five Protocols and emergency preparedness at home</p>	<p>Staff: Give clear instructions and follow protocol</p> <p>Students: Have students hold a calming item (stuffed animal, book, small toy)</p>	<p>Identify how the class worked well together Give students time to ask questions Reiterate that drills help us stay safe Move back into learning when class is ready</p>
<p>5th Grade to 8th Grade</p> <p><i>Developmental Considerations:</i> Students are capable of understanding purpose of safety drills Students benefit from adult direction but are able to perform Big Five actions independently Review prior knowledge of the Big Five protocols</p>	<p>Staff: Clearly post the Big Five Protocols in each classroom</p> <p>Parents/Guardians: Encourage families to discuss the Big Five Protocols and Emergency Preparedness at home</p>	<p>Staff: Give clear instructions and follow protocol Emphasize cooperation as a class</p> <p>Students: Assign students to perform action steps during the incident</p>	<p>Appreciate students who performed specific tasks and identify how the class worked well together Give students time to ask questions Reiterate that drills help us stay safe Move back into learning when class is ready</p>
<p>9th Grade to 12th Grade</p> <p><i>Developmental Considerations:</i> Students are able to identify probable dangers confronting a school Students benefit from adult direction, but are able to perform Big Five actions independently in an emergency</p>	<p>Staff:</p> <ul style="list-style-type: none"> Clearly post the Big Five Protocol in your classroom <p>Students:</p> <ul style="list-style-type: none"> Have students discuss what to expect during a drill or incident Assign students specific roles and have them walk through those actions 	<p>Staff: Give clear instructions and follow protocol</p> <p>Students: Assign students to perform action steps during the incident</p>	<p>Spend time debriefing the incident or drill with the class Allow students to ask questions Identify how the class worked well together Move back into learning when class is ready</p>

DISASTER SERVICE WORKER

California Government Code, Section 3100, Title 1, Division 4, Chapter 4 states that public employees are Disaster Service Workers and are subject to such disaster service activities as may be assigned by their superiors or emergency service commanders. The term “public employees” includes all persons employed by the state or any county, city, city and county, state agency or public district. The law applies in the following cases:

- When a local emergency is proclaimed
- When a state of emergency is proclaimed
- When a federal disaster declaration is made

WHAT DOES A DISASTER SERVICE WORKER DO?

- Public employees serving in the role of Disaster Service Workers may be asked to do jobs other than their usual duties for periods exceeding normal work hours
- Employees may be scheduled in shifts and asked to return to the work site at hours outside the normal work day
- Disaster Service Workers will be deployed within the Incident Command System and may perform a variety of duties including oversight of shelter care, communications, logistics, first aid and comfort, or community support and safety
- When pressed into disaster service, employees’ Workers Compensation coverage becomes the responsibility of state government (OES), but the employer pays the overtime. These circumstances apply only when a local or state emergency is declared.

To provide effective support as a Disaster Service Worker, employees must have the confidence their own families are well prepared to deal with emergencies in their absence. The time and energy a staff member commits to being prepared at home will provide the best assurance they are capable of dealing with the emergency situation at the school/work site.

CALLING 911

Response is the process of implementing appropriate actions while an emergency situation is unfolding. In this phase, schools mobilize the necessary resources to address the emergency at hand. This may include calling or texting 911.

When calling 911, be prepared to remain on the phone and answer specific questions. In order to complete an accurate assessment of the situation, the 911 Dispatcher must obtain as much information as possible to best inform emergency responders and engage the appropriate level of medical response.

WHEN REPORTING AN EMERGENCY:

- Remain calm and speak slowly and clearly
- Be prepared to provide name, location of the incident, and caller's location, if different from the scene of the emergency
- Although caller ID information may transfer immediately to the 911 Dispatcher, it is *not* available in all locations. The 911 Dispatcher will confirm and verify the phone number and address for *every* call received
- Answer *all* questions asked by the 911 Dispatcher, even those that seem repetitious
- Do not hang up until the Dispatcher says to do so

CALLING 911 FROM A CELL PHONE:

- Cell phone calls to 911 are often sent to a 911 answering point based on cell radio coverage. Cell coverage areas don't always match city boundaries
- Know your cell phone number and be prepared to give the dispatcher an exact address

TEXT TO 911:

Text to 911 is the ability to send a text message to reach 911 emergency call takers from your mobile phone or device. However, because text to 911 is currently only available in certain locations, always make a voice call to contact 911 during an emergency whenever possible. Call if you can. Text if you can't.

When calling 911, time is of the essence. Remain calm; speak slowly and clearly. The 911 Dispatcher needs to gather the correct information the first time they ask for it.

POWER OUTAGES DURING COVID-19

Power Outages – both planned and unplanned have become more common in San Mateo County. This section will address power outages during the COVID-19 pandemic. Please see the Coalition for Safe Schools and Communities' [Hazard Response Guidelines](#) for more general information on addressing power outages.

- Work with site and district facilities staff to determine the need for generator use to keep key equipment operating (e.g., air purifiers and fan, student medical equipment, kitchen facilities, science lab equipment).
- Open windows and doors, if they are not already open, to provide adequate air flow if HVAC and fans are not available for use.
- If possible and air quality permits, move students to an outdoor setting for better air flow.
- If a power outage occurs during poor air quality days, consider moving students to distance learning.
- If a planned outage is scheduled for multiple days, consider moving students to distance learning.
- If a planned power outage may impact student and teachers' ability to use technology at home, send assignments and materials home with students.

DRILLS AND EXERCISES

It is essential for school and district staff to conduct drills and engage in various preparedness exercises. Exercises should occur on a regular basis and include key school staff and local partners. A standardized and compliant emergency management plan utilizes a graduated approach to drills. Begin simply with orientation activities before advancing to more complex and sophisticated drills and exercises. Use drills and exercises to:

- Reveal gaps in preparedness
- Identify resource and supply needs
- Improve coordination between the school and community
- Clarify roles and responsibilities
- Increase overall level of emergency readiness, including response capacity of all staff and students

TYPES OF DRILLS AND EXERCISES:

- **Orientation Seminar:** Introduces emergency policies and procedures to new staff and students, allows for discussion and clarifying questions
- **Tabletop Exercises:** Simulates an emergency situation in an informal, stress-free environment, elicits discussion and questions
- **Drill:** Simulates an incident in a limited scope, tests function of emergency plan, initiates informal discussion of simulated emergencies
- **Functional Exercise:** Simulates a real emergency under time-sensitive conditions, tests and measures seldom-used resources
- **Full-Scale Exercise:** Tests an entire community's response capability, uses real equipment, takes place in "real time"

STRATEGIES FOR TRAUMA-INFORMED DRILLS:

Students and staff may experience anxiety when anticipating and participating in drills. School leaders should take explicit steps to minimize the impact of drills on students and staff. Use a **TRAUMA-INFORMED** and developmentally appropriate approach to drills.

- Consider using social stories (short stories that depict the emergency response situation) or leading the class in table top exercises to practice Drop, Cover and Hold On, Evacuation, Shelter-in-Place and Secure Campus Drills
- Conduct Lockdown/Barricade drills only with adult staff when students are not present.

DRILLS AND EXERCISES

- Consider conducting a table top exercise with adult staff
- Use The Big Five story books for K-3 students to engage in classroom activities and discussions about Lockdown/Barricade and other Big Five actions
- Discuss and assign certain roles for 4th-12th grade students during the event (help barricade, close blinds, turn off lights). Involve students in response
- Conduct Table Top activities with students in 6th-12th grade, go over the procedures specifically for each Big Five Action
- Identify objects for students to hold for comfort
- Always announce drills in advance and prepare all participants as “surprise” drills can cause unnecessary panic
- Prioritize the most serious gaps and focus on the specific objectives
- Because children are sensitive to adult behavior, staff should be trained to exhibit confidence and remain calm during drills
- Make sure your school is ready for the type of drill planned
- Allow enough time for the exercise
- Gradually increase sophistication of exercises over time, but do not add unnecessary complications
- Adults should monitor students during the drill for signs of emotional distress and provide support accordingly
- Evaluate every exercise and conduct a debrief with staff and students

THINK ON YOUR FEET

In the event of an emergency, quick thinking is imperative for survival. During a crisis situation, an individual must think on their feet to determine the best course of action. These choices may include:

- get off campus,
- hide,
- implement Lockdown/Barricade, *or*
- fight an assailant in the most extreme situation.

Understanding and practicing these options can help an individual respond decisively and in so doing, best ensure the safety and survival of self and others.

In the event of a Violent Intruder on campus, expect to hear noise from alarms, gunfire, explosions, and shouting. It is not uncommon for people experiencing a dangerous situation to first deny or rationalize the possible danger rather than respond. Quality training can help individuals think clearly and quickly in the midst of a chaotic scene. Proper training should include helping staff recognize the sounds of danger. Train staff and students to act decisively and remain flexible with a "think on your feet" approach.

LOOK, LISTEN AND LEAVE: FIRE ALARM

The **LOOK, LISTEN, AND LEAVE** protocol is an important action to practice when training the "think on your feet" mindset. At the sound of a fire alarm, staff and other leaders should take a moment to assess the scene before evacuating. The three steps of **LOOK, LISTEN, AND LEAVE** are:

- **LOOK** - open the classroom door and look out. Do you see smoke or fire? Is the path to your pre-planned evacuation spot clear of obstacles? Do you notice anything out of the ordinary?
- **LISTEN** - in addition to the alarm, are there other sounds? Do you hear anything that would indicate it is unsafe to leave the room (explosions, panicked voices, the discharge of a weapon)?
- **LEAVE** - having determined it is safe to do so, direct students to leave the room toward the pre-determined evacuation spot.

IMMEDIATE ACTION RESPONSE: THE BIG FIVE

The Big Five is a set of **IMMEDIATE ACTION RESPONSES** intended to be implemented quickly in any variety of emergency situations. When an emergency occurs, it is critical that staff members take *immediate* steps to protect *themselves*, their *students*, and *other people* on campus. Staff members must become familiar with each Immediate Action Response and be prepared to perform assigned responsibilities. All students must also be taught how to implement each of The Big Five protocols.

IMMEDIATE ACTION RESPONSE: THE BIG FIVE

BIG FIVE ACTION	WHEN	WHAT
SHELTER IN PLACE	Environmental hazards, dangerous air quality due to smoke or other contaminants, fire off-site, dangerous wildlife in the area, or severe weather.	Isolate students and staff from the outdoor environment. Go inside. If hazard is airborne, close doors, windows, and air vents. Shut down air conditioning/heating units.
DROP, COVER AND HOLD ON	Earthquake, explosion, or falling debris.	Protect students and staff from falling debris, drop to the floor, take cover under heavy furniture and hold on.
SECURE CAMPUS	Potential threat of violence in the surrounding community and/or police activity off-campus but nearby.	Get all staff/students inside. Close and lock all classrooms/office doors. Continue instruction as planned. Remain inside until otherwise directed.
LOCKDOWN/BARRICADE	Violent intruder on campus.	Go inside, lock and barricade all doors. Cover windows and turn off lights. Remain quiet and alert. No one is allowed to enter or exit for any reason unless directed by law enforcement.
EVACUATION	Bomb threat, chemical/gas leak, fire inside the building or nearby premises, severe weather alert, after an earthquake or explosion, or when implementing Student Release/Reunification.	Lead students and school staff from school buildings to a predetermined location.

For more information about specific hazards, see *Emergency Management Resource Guide*.

EMERGENCY RESPONSE BOX

To ensure site leaders and emergency personnel have access to information and supplies critical in an emergency, prepare two Emergency Response Boxes with the items listed below. Keep both boxes on campus, each in a separate and accessible location.

The Emergency Response Box is referenced in every protocol of the Big Five. The information therein should be updated annually, preferably in July/August in preparation for the new school year.

ITEM	RESPONSIBLE PARTY	DATE
Aerial Photo of Campus		
Building Blueprints		
Campus Map		
Emergency Plan		
Fire Alarm Turn-Off Procedure		
First Aid Supplies		
Incident Command Assignments		
Incident Command Staging Area Map		
Bell Schedule / Master Schedule Course List		
Sprinkler System Turn-Off Procedure		
Street Map		
Student/Staff Medical Alert List		
Teacher/Employee Roster		
Utilities Shut-Off Procedures		
Yellow Caution Tape		



SHELTER IN PLACE

SHELTER IN PLACE is a short-term measure implemented to isolate students and staff from the outdoor environment and prevent exposure to airborne contaminants or threats posed by wildlife or other hazards. The procedures may include closing and sealing doors, windows, and vents; shutting down the classroom/building heating, ventilation and air conditioning systems to prevent exposure to the outside air; and turning off pilot lights.

SHELTER IN PLACE is considered appropriate for, but is not limited to, the following types of emergencies:

- External chemical release
- Fire in the community
- Hazardous material spills
- Unhealthy air quality outside
- Dangerous wildlife on or near campus

A Shelter-in-Place response may require that HVAC systems be shut down to provide protection from contaminated outside air. Students and staff may freely move about inside the buildings, but no one should leave the protected space until directed by fire officials, law enforcement, or site administration.

SHELTER IN PLACE:

- Requires an understanding that all heating, air conditioning, and ventilation systems may need to be shut down immediately
- Requires an understanding that all pilot lights and sources of flame may need to be extinguished
- Requires an understanding that any gaps around doors and windows may need to be sealed
- Allows for free movement within classrooms or offices

POOR AIR QUALITY:

Continue to monitor the EPA's [AirNow website](#) and refer to the [School Air Quality Activity Recommendations](#) for guidelines about when and how to modify outdoor physical activity and outdoor learning based on the AQI. If the AQI reaches 150 or higher, the school should begin to implement its shelter-in-place protocols. Refer to the [Decision Making Guide for School Closure](#) to help determine whether your school and district meet the requirements to stay open.

SHELTER IN PLACE



- If the school’s HVAC system air filter is new or has been upgraded, set the central system’s circulating fan to operate continuously (set to “ON” rather than “AUTO”) and make sure HEPA or MERV-13 filters are installed.
- An alternative option is to use portable air cleaners, which should be set to run continuously. Windows and doors should be closed for greatest effectiveness. For classrooms, consider Medify-ma-40 (or similar) air purifiers. For larger rooms, consider Medify-ma-112 (or similar) air purifiers.
- Avoid activities that create more indoor and outdoor air pollution, such as frying foods, sweeping, vacuuming, and using gas-powered appliances.
- If COVID-19 is prevalent in the community, recirculate air if high-quality air filters are installed and/or expand use of portable filters.



SHELTER IN PLACE

SCHOOL INCIDENT COMMANDER - SITE ADMINISTRATOR ACTIONS:

- Assume Incident Command (IC) role
- Instruct designee to call 911. Designee must be ready to provide location, status of campus, and all available details of situation
- Make public address announcement. Instruct students and staff to remain calm and convey reassurance that the situation is under control

EXAMPLE:

“Your attention please. We have an environmental hazard in the community and are implementing SHELTER IN PLACE procedures. Students and all staff are to remain indoors with windows and doors securely shut. Turn off heating or air conditioning units. If you are outside, move indoors immediately. Do not go outside for any reason until you receive further instructions. This is NOT a drill.”

– REPEAT –

- Designate assigned individual to close doors and windows in administration building
- Designate assigned individual to shut off heating or air conditioning units in administration building, if necessary
- Make arrangements for central HVAC shutdown, as necessary
- When able, alert Superintendent’s office
- Put on emergency IC/Admin vest and continue as Incident Commander until relieved by law enforcement
- Access the “Emergency Response Box” (p. 11) in order to provide fire officials with maps, rosters, etc.
- Meet fire department or law enforcement at Incident Command Post
- Transfer incident command to fire officials, but provide whatever assistance/information is required. School Incident Commander remains part of the ICS Unified Command and is expected to serve at Incident Command Post through duration of event.

SHELTER IN PLACE



SITE ADMINISTRATOR ACTIONS *(continued)*:

- If possible, provide periodic updates to staff via public address, email, or other agreed upon means. Continue updates even if there is no change in the situation.
- When directed by fire, health, or other authority, give the **ALL CLEAR** instruction to indicate that the normal school routine can resume
- Through whatever means is most effective, provide parents/ guardians with a brief description of the emergency, how it was handled, and what steps are being taken to ensure the ongoing safety of students and staff

STAFF ACTIONS:

- Immediately clear students from the halls. Stay away from all doors and windows
- Keep all students in the classroom until further instructions are received. Support those needing special assistance
- If directed by Incident Command, secure individual classrooms: a) close doors and windows; b) shut down the classroom HVAC system to; c) turn off fans; d) seal gaps under doors and windows with wet towels, duct tape, or other materials if instructed by School Incident Commander
- Take attendance and call or email attendance report to school secretary or according to site protocol
- Wait for another action or, if **ALL CLEAR** announcement is issued, return to normal class routine



DROP, COVER, AND HOLD ON

DROP, COVER AND HOLD ON is the immediate action taken in the event of an earthquake or explosion and protects students and staff from flying and falling debris. It is an appropriate action for, but is not limited to, the following types of emergencies:

- Earthquake
- Explosion

In the event of an explosion, earthquake, or other event causing falling debris, immediately “DROP, COVER, and HOLD ON.” Students and staff should drop to the floor, duck under a sturdy desk or table, cover the head with arms and hands, and hold onto furniture. Turn away from windows to stay clear of breaking glass. Individuals in wheelchairs can secure against an interior wall and lock the wheels. Protect head by covering with arms if possible.

DROP, COVER, AND HOLD ON:

- Must be practiced for immediate and automatic response
- Is the single most useful action to protect from injury in an earthquake
- In the event it is impossible to duck under sturdy furniture, continue to cover face and head with arms and hold onto something sturdy
- Requires an awareness that most injury in earthquakes is caused by breaking glass or falling objects
- Requires an awareness that fire alarms and sprinkler systems may go off in buildings during an earthquake, even if there is no fire
- Requires alert attention to aftershocks
- Requires that staff and students assist those with special needs to ensure safe cover for all
- Evacuate only if there is damage to the building, the building is on fire, or location is in a tsunami zone

DROP, COVER, AND HOLD ON



SCHOOL INCIDENT COMMANDER - SITE ADMINISTRATOR ACTIONS:

- Assume Incident Command (IC) role
- As soon as possible after recognizing seismic activity, make a public address (PA) announcement. If the PA system is not available, use other means of communication, i.e., sending messengers to rooms to deliver instructions
- Remain calm and give clear directions

EXAMPLE:

“Attention please. We are experiencing an earthquake.
For your protection, follow DROP, COVER, and
HOLD ON procedures. This is NOT a drill.”

– REPEAT –

- According to site protocol, collect status reports from each classroom. Determine the extent of physical injuries and/or structural damage
- If injuries are reported, instruct designee to call 911 immediately if classroom teacher/supervisor has not already done so
- Access the “Emergency Response Box” (p. 11) in order to chart reported injuries and/or building damage on building map. Be ready to provide this map to First Responders upon arrival
- Put on emergency IC/Admin vest and continue as Incident Commander until relieved by fire officials or law enforcement
- Before initiating any evacuation, and if deemed safe to move around the building, deploy Security/Search and Rescue Team to check for fires, status of utilities, and structural and nonstructural damage. If the team can smell or hear gas, take appropriate steps to shut the gas off
- Based on available information, decide on the need for evacuation.
- An evacuation outdoors should be ordered if the structural integrity of the building is in doubt



DROP, COVER, AND HOLD ON

SITE ADMINISTRATOR ACTIONS *(continued)*:

- Structural damage might not require an evacuation. Inside may be more safe than outside.
- When able, report campus status to Superintendent's office
- If 911 is called, meet fire officials, emergency medical responders or law enforcement at Incident Command Post
- If incident includes casualties, deploy (School) Liaison Officer to First Responder's Emergency Medical Command Post
- After proper identification, only Coroner, police chaplain, or other public official should deliver official notification of the deceased
- Be prepared to transfer command of immediate emergency to First Responders. School Incident Commander remains part of the ICS Unified Command and is expected to serve at Incident Command Post through duration of event
- If site is designated unsafe to return, initiate **STUDENT RELEASE** procedures
- Through whatever means is most effective, provide parents/guardians with a description of the emergency, how it was handled, and what steps are being taken in its aftermath

STAFF ACTIONS - INSIDE:

- At first recognition of an earthquake, instruct students to move away from windows
- Initiate **DROP, COVER, AND HOLD ON** procedures. Immediately drop to the floor under desks, chairs, or tables. With back to windows, place head between knees, hold on to a table leg with one hand, and cover the back of the neck with the other arm
- Move as little as possible. However, if a person is unable to find protection under sturdy furniture, direct them to shelter against an interior wall and turn away from windows and other glass
- Any person in a wheelchair should shelter against an interior wall. Turn the back to the windows, lock the wheels, and if possible, protect head and neck with arms

DROP, COVER, AND HOLD ON



STAFF ACTIONS - INSIDE *(continued)*:

- Each time an aftershock is felt, **DROP, COVER, AND HOLD ON**. Aftershocks frequently occur minutes, days, even weeks following an earthquake
- When it appears safe to release from **COVER**, assess any injuries and/or damage and report status to Incident Commander according to site communications protocol. Be prepared to call 911 directly if necessary
- Wait for further instructions from School Incident Commander or First Responders or if that seems unlikely and building is compromised, evacuate students to predetermined Evacuation Assembly Area

STAFF ACTIONS - OUTSIDE:

- Find a clear spot and drop to the ground. (Stay away from buildings, power lines, trees, and streetlights, etc.)
- Commence **DROP AND COVER** in the **DROP, COVER, AND HOLD ON** procedures
- Place head between the knees; cover back of neck with arms and hands
- Any person in a wheelchair should find a clear spot, lock the wheels, and if possible, place head between the knees; cover back of neck with arms and hands
- Remain in place until shaking stops or for at least 20 seconds
- Each time an aftershock is felt, **DROP AND COVER**. Aftershocks frequently occur minutes, days, even weeks following an earthquake
- When it appears safe to move, report location, injuries and/or any damage to School Incident Commander according to site communications protocol
- Wait for further instructions from School Incident Commander or First Responders, or if that seems unlikely, evacuate students to predetermined Evacuation Assembly Area



SECURE CAMPUS

SECURE CAMPUS is implemented when the threat of violence or police action in the surrounding community requires precautionary measures to ensure the safety of staff and students. When a campus is in **SECURE CAMPUS** status, classroom instruction and/or activity may continue as long as all classroom and office doors are locked and all students and staff remain inside *through the duration of the event*. Outer gates and other entrance/exit points can be closed (**NOT LOCKED**) to deter a potential perpetrator from entering school grounds.

This response is considered appropriate for, but not limited to, the following types of emergencies:

- Potential threat of violence in the surrounding community
- Law enforcement activity in the surrounding community

A **SECURE CAMPUS** response may be elevated to **LOCKDOWN / BARRICADE** as circumstances demand in which case instruction immediately ceases and students and staff follow **LOCKDOWN / BARRICADE** procedures.

Secure Campus allows for instruction to continue while the school takes preventative action in the event of a threat in the neighborhood surrounding a school. Lock all classroom/office doors, close entrance and exit points on the school's perimeter, and continue classroom instruction.

SECURE CAMPUS:

- Is intended to prevent a potential threat present in the community from entering campus
- Heightens school safety while honoring instructional time
- Requires that all exterior classroom / office doors are locked and remain locked
- Wear face coverings per school policy while remaining in locked classrooms
- Is intended to prevent intruders from entering occupied areas of the building
- Requires that students and staff remain in **SECURE CAMPUS** status until **ALL CLEAR** is issued by School Incident Commander



SCHOOL INCIDENT COMMANDER - SITE ADMINISTRATOR ACTIONS:

- Assume Incident Command role
- Make public address announcement. Instruct teachers and staff to immediately lock doors and remain in the classroom or secured area until further instructions are provided

EXAMPLE:

“Your attention please. Due to law enforcement activity in the community, please implement **SECURE CAMPUS** procedures immediately. This is **NOT** a drill.”

– REPEAT –

- Instruct designee to call law enforcement non-emergency number and inform them of Secure Campus status. Ask to be kept current on the active event
- Designate assigned individual to lock all doors leading into administration building
- Designate assigned individual to close (**NOT LOCK**) all entrance and exit points on the campus perimeter
- If relevant to site staffing assignments, contact campus School Resource Officer or other security personnel and provide available information
- When able, alert Superintendent’s office
- Maintain heightened state of readiness in the case the community threat intensifies and school needs to elevate response to **LOCKDOWN / BARRICADE**
- If students are out at break, recess, or lunch and situation is deemed imminent, announce **SECURE CAMPUS** status and ask that all students return to assigned classrooms immediately



SITE ADMINISTRATOR ACTIONS *(continued)*:

- Communicate clearly with students about what is going on. Explain there is no immediate threat of danger and the school is taking extra safety precautions. Give students a chance to ask questions related to the event and protocol
- Continue teaching and learning until Secure Campus is released
- If possible, provide periodic situational updates to staff via public address, email, or other agreed upon means. Continue updates even if there is no change in the situation
- Depending on the timing of the situation, consider deactivating the passing period bells. Students and staff must remain inside for as long as the threat persists
- After the emergency has been neutralized, initiate **ALL CLEAR**
- Through whatever means is most effective, provide parents/guardians with a description of the emergency, how it was handled, and what steps are being taken in its aftermath

STAFF ACTIONS:

- Move to the door and instruct any passing students to return to assigned classroom immediately
- Close and lock the door
- Continue the class instruction or activity as normal
- Enforce the “no entrance” and “no exit” protocol. Remain in the classroom or secured area and wait for further instructions
- Be alert to the possibility that the response may elevate to **LOCKDOWN / BARRICADE**
- Do not call the office to ask questions; School Incident Commander will send out periodic updates
- Wait for another action or, if **ALL CLEAR** is issued, return to normal class routine



STAFF ACTIONS - IF STUDENTS ARE ENGAGED IN CLASS ACTIVITY ON AN OUTLYING FIELD (PE OR OTHER ACTIVITY):

- Gather students together and organize into an orderly formation
- Inform students that as part of **SECURE CAMPUS** procedures, the class will move immediately to a pre-determined classroom location
- Proceed to pre-determined classroom location as quickly as possible
- Once inside, take attendance to ensure all students are accounted for
- By classroom phone, cell phone, walkie-talkie, or other means, contact School Incident Commander to report class location and any absent or missing students
- Implement all classroom policies and procedures for **SECURE CAMPUS** status
- Wait for another action or, if **ALL CLEAR** announcement is issued, return to normal class routine



LOCKDOWN / BARRICADE

LOCKDOWN / BARRICADE is implemented when the imminent threat of violence or gunfire is identified on the campus or the school is directed to do so by law enforcement. During **LOCKDOWN / BARRICADE**, students are to remain in designated classrooms or lockdown locations at all times. Do not evacuate until room is cleared by law enforcement or site administration. This response is considered appropriate for, but not limited to, the following types of emergencies:

- Gunfire
- Threat of extreme violence outside the classroom

During a **LOCKDOWN / BARRICADE**, remember that immediate safety from the violent intruder is the priority and guides all actions, above all other concerns, including COVID-19 safety procedures.

Lockdown/Barricade requires closing and locking doors and barricading with heavy objects. No one is allowed to enter or exit until door-to-door release by law enforcement or School Incident Commander who will unlock door from the outside with keys.

LOCKDOWN / BARRICADE:

- Is a response to an immediate danger; it is not preceded by any warning
- Demands quick action; an active shooter, for example, can fire one round per second
- Requires common sense thinking under duress; do what must be done to best ensure survival of students and staff
- If it is possible to safely get off campus with students, take that action immediately (Run)
- If it is not possible to get off campus, quickly lockdown inside a safe room and barricade the entrance (Hide)
- Once a room is secured, no one is allowed to enter or exit under any circumstances
- Prioritize clear communication. Remove face covering if necessary.
- In the extreme instance that a Violent Intruder is able to enter a room, occupants should be prepared to fight back (Fight)

LOCKDOWN / BARRICADE



THINK ON YOUR FEET

In the event of a Violent Intruder on campus, quick thinking is imperative for survival. Especially when an active threat of violence is present, an individual must think on their feet to quickly determine the best course of action.

In the event of a Violent Intruder on campus, expect to hear noise from alarms, gunfire, explosions, and shouting. It is not uncommon for people confronted with a threat to first deny the possible danger rather than respond. Quality training can help individuals think clearly in the midst of a chaotic scene. Proper training should include helping staff recognize the sounds of danger and teaching them to forcefully communicate and take necessary action.

These actions would likely include:

ESCAPE / GET OFF CAMPUS:

- Only attempt this if you are confident the suspect(s) is not in the immediate vicinity
- Safely get off campus; find a position of cover or safe place for assembly
- Guide/instruct others you encounter on the way to follow you to safety
- Call 911 immediately to report location and request emergency services if necessary
- Once in a safe place – stay there

HIDE / LOCKDOWN / BARRICADE:

- Clear all hallways; get students and staff inside immediately
- Once locked and barricaded inside a room, follow all protocols for Lockdown/Barricade as practiced
- Direct all those in the room to remain still and quiet; turn off/silence cellphones
- If unable to find cover inside a secure room, quickly seek out a hiding place on campus



LOCKDOWN / BARRICADE

THINK ON YOUR FEET *(continued)*

FIGHT:

- If confronted by an assailant, as a last resort, consider trying to disrupt or incapacitate through aggressive force or by using items in the environment such as fire extinguishers or chairs
- There are documented instances where aggressive action on the part of the victims resulted in stopping the attacker
- Fighting back is NOT an expectation, merely one option for a last resort response

LOOK, LISTEN, AND LEAVE: FIRE ALARM

If site alarm is triggered during Lockdown/Barricade, always respond with caution and **LOOK** and **LISTEN** for unusual or violent activity before initiating an evacuation **LEAVE**.

- **LOOK** - open the classroom door and look out. Do you see smoke or fire? Is the path to your pre-planned evacuation spot clear of obstacles? Do you notice anything out of the ordinary?
- **LISTEN** - in addition to the alarm, are there other sounds? Do you hear anything that would indicate it is unsafe to leave the room (explosions, panicked voices, the discharge of a weapon)?
- **LEAVE** - only after determining it is safe to do so, direct students to leave the room toward the pre-determined evacuation spot

LOCKDOWN / BARRICADE



SCHOOL INCIDENT COMMANDER - SITE ADMINISTRATOR ACTIONS:

- Assume Incident Command role
- Instruct designee to call 911. Designee must be ready to provide location, status of campus, all available details of situation
- Make public address announcement. Instruct teachers and staff to immediately lock doors and barricade in the classroom or secured area until further instructions are provided

EXAMPLE:

“Your attention please. We have a Violent Intruder on campus. Implement LOCKDOWN/BARRICADE procedures immediately. This is NOT a drill.”

– REPEAT –

- Designate assigned individual to lock all doors leading into administration building
- Instruct office staff to seek safe refuge in a pre-determined “safe” location within the building
- Through whatever means is most effective, provide parents/guardians with a description of the emergency, how it was handled, and what steps are being taken in its aftermath

ONLY IF SAFE TO DO SO:

- Attempt to contact on-campus School Resource Officer or other security personnel and provide available information
- When able, alert Superintendent’s office
- Put on emergency IC/Admin vest and continue as Incident Commander until relieved by law enforcement
- Access the “Emergency Response Box” (p.11) in order to provide law enforcement with maps, rosters, etc.
- If possible, provide periodic updates to staff via public address, email, or other agreed upon means. Continue updates even if there is no change in the situation
- If safe to do so, meet law enforcement at Incident Command Post



LOCKDOWN / BARRICADE

- After the emergency has been mitigated, initiate EVACUATION or room-to-room clearing procedures as directed by law enforcement
- Collect attendance and notify law enforcement of any missing persons
- If incident includes casualties, deploy (School) Liaison Officer to First Responder's Emergency Medical Command Post. After proper identification, only Coroner, police chaplain, or other public official should deliver official notification of deceased persons
- Transfer incident command to law enforcement but provide whatever assistance/information they require. School Incident Commander remains as part of the ICS Unified Command and is expected to serve at Incident Command Post through duration of event
- Through whatever means is most effective, provide parents/guardians with a description of the emergency and the response, and if appropriate, what steps are being taken in its aftermath

STAFF ACTIONS - IF STUDENTS ARE IN CLASS AT TIME OF LOCKDOWN / BARRICADE:

- *Immediately* move to the door and check for passing students. Divert as many students as possible into the classroom
- Lock and close the door and barricade with heavy objects
- Close blinds and turn off lights. If the door has a window, cover with a pre-cut piece of dark paper or cardboard
- Instruct students to stay quiet and out of sight. Relocate against the wall least visible to the outside and out of sight of intruder
- Turn off television, LCD projector, document camera, etc. The room should be dark and quiet
- Silence all cell phones
- **DO NOT OPEN THE DOOR FOR ANYONE.** Law enforcement and/or School Incident Commander will use keys to unlock door and clear the room
- *Only if* there is a life-threatening emergency inside the room and there is no other way to request medical assistance, place a red colored item (card, red cross, sweatshirt, etc.) on/in the window or slide under the outside door

LOCKDOWN / BARRICADE



STAFF ACTIONS - IF STUDENTS ARE IN CLASS

AT TIME OF LOCKDOWN / BARRICADE *(continued)*:

- If an active threat is still present at the time law enforcement comes on scene, law enforcement will ignore the red signal until the active threat has been neutralized
- If safe to do so, locate emergency packet and attendance roster, remove staff ID placard and put it on
- If safe to do so, take attendance and document students who are present in the room
- Remain in the classroom or secured area until further instructions are provided by School Incident Commander or law enforcement
- Do NOT call office to ask questions; School Incident Command will send out periodic updates
- In the extreme instance that a Violent Intruder is able to enter a room, occupants should be prepared to fight back (Fight)
- Maintain order in all areas of shelter or assembly and await the arrival of law enforcement. Be ready for lengthy stay of 2-4 hours

STAFF ACTIONS - IF STUDENTS ARE OUT OF CLASS

AT TIME OF LOCKDOWN / BARRICADE:

- Move students to nearest available safe building or location, without drawing attention to self or students. If doors are locked, continue to look for a safe area. Consider moving students off-campus if that seems the safest option
- Do not chase students who run. Let them go
- Do not go into rooms that cannot be secured and offer no way out
- If secure inside a room, lock all doors, close blinds/curtains, turn off lights, and direct students to relocate against the wall least visible to the outside and out of harm's way
- Instruct students to stay quiet and out of sight
- Silence all cell phones
- Turn off television, LCD projector, document camera, etc. The room should be dark and quiet



LOCKDOWN / BARRICADE

STAFF ACTIONS - IF STUDENTS ARE OUT OF CLASS AT TIME OF LOCKDOWN / BARRICADE (continued):

- Remain calm. If safe to do so, attempt to maintain separation between students and the perpetrator
- If an active threat is still present at the time law enforcement comes on scene, Law enforcement will bypass injured victims in order to neutralize the threat
- If safe to do so, locate emergency packet and remove staff ID placard and put it on
- If safe to do so, take attendance and document individuals who are present in the room
- If safe to do so and according to site communications protocol, contact School Incident Commander or designee to document your whereabouts as well as any students/staff under your supervision
- In the extreme instance that a Violent Intruder is able to enter a room, occupants should be prepared to fight back (Fight)
- Maintain order in all areas of shelter or assembly and await the arrival of Law enforcement. Be ready for lengthy stay of 2-4 hours

STAFF ACTIONS - IF STUDENTS ENGAGED IN CLASS ACTIVITY ON AN OUTLYING FIELD (PE OR ACTIVITY CLASSES):

- Gather students together
- Inform students that as part of **LOCKDOWN / BARRICADE** procedures, the class will evacuate off-campus to a pre-determined Off-Site Evacuation Location
- Follow pre-arranged evacuation route to evacuation location
- Should the group be confronted by the intruder who is intent on doing harm, consider taking defensive measures to run, hide, or fight the assailant
- Upon arrival at the pre-arranged location, take attendance
- By radio communication or cell phone, contact School Incident Commander or designee or 911 Dispatcher to report class location and any absent or missing students

LOCKDOWN / BARRICADE



- Maintain order in all areas of shelter or assembly. Do not release students to parent/guardian until instructed by School Incident Commander or Law enforcement



EVACUATION

EVACUATION is implemented when conditions make it unsafe to remain in the building. This action provides for the orderly movement of students and staff along prescribed routes from inside school buildings to a designated outside area of safety.

EVACUATION is considered appropriate for, but is not limited to, the following types of emergencies:

- Bomb threat
- Chemical accident
- Explosion or threat of explosion
- Fire
- Earthquake

In the event of an explosion, earthquake, or other event causing falling debris, **EVACUATION** will be preceded by a “**DROP, COVER, and HOLD ON**” protocol. Students and staff should drop to the floor, duck under a desk or table, cover the head with arms and hands, and hold onto furniture.

THINK ON YOUR FEET: LOOK, LISTEN, AND LEAVE - FIRE ALARM

Before evacuation, take a moment to look outside the door for any potential dangers. Listen for anything unusual that might pose a safety risk. Once it's determined the path is safe, evacuate the office or classroom to a designated safe area.

EVACUATION:

- Requires exit from the building to a designated safe site, on-campus or off-site
- May require that students and staff rely on district bus transportation
- May require staff to exit via alternate routes based on circumstances
- Requires that students remain with assigned teachers unless circumstances prohibit it
- Requires that staff and students assist those with special needs to ensure for safe egress of all

EVACUATION



EVACUATION ROUTES:

Take care in choosing a designated evacuation area. Consider whether there is a clear route to the area from all parts of the campus, and whether it is far enough away in the case of a fire or gas leak, but close enough to be reached on foot. Consider also having multiple designated evacuation areas in the event one is obstructed or otherwise becomes unsafe during an emergency. Make sure there is a clear, unblocked path onto campus for emergency vehicles. Be sure to include evacuation to designated area(s) as part of drills and training.

HOW TO ASSIST THOSE WITH DISABILITIES DURING AN EVACUATION:

The needs and preferences of non-ambulatory individuals will vary. Those at ground floor locations may be able to exit without help. Others may have minimal ability to move, but lifting them may be dangerous. Some non-ambulatory people also have respiratory complications. Oversee their careful evacuation from smoke or vapors if danger is immediate.

TO ALERT VISUALLY IMPAIRED INDIVIDUALS:

- Announce the type of emergency
- Offer arm for guidance
- Tell person where you are going, obstacles you encounter
- When you reach safety, ask if further help is needed

TO ALERT INDIVIDUALS WITH HEARING LIMITATIONS:

- Turn lights on/off to gain person's attention *or*
- Indicate directions with gestures *or*
- Write a note with evacuation directions

TO EVACUATE INDIVIDUALS USING CRUTCHES, CANES, OR WALKERS:

- Evacuate these individuals as injured persons
- Assist and accompany to evacuation site, if possible, *or*
- Use a sturdy chair (or one with wheels) to move person, *or*
- Help carry individual to safety

TO EVACUATE WHEELCHAIR-USING INDIVIDUALS:

- Give priority assistance to wheelchair users with electrical respirators
- Most wheelchairs are too heavy to take downstairs; consult with the affected individual to determine the best carry options
- Reunite person with the wheelchair as soon as it is safe to do so



EVACUATION

SCHOOL INCIDENT COMMANDER - SITE ADMINISTRATOR ACTIONS:

- Assume Incident Command role
- Instruct designee to call 911. Designee must be ready to provide location, status of campus, all available details of situation
- Initiate the alarm and make public address announcement. Instruct teachers and staff to immediately evacuate the building and for students to remain with their teachers until further instructions are provided

EXAMPLE:

“Your attention please. We have an emergency situation. Evacuate all buildings immediately (to the on-site location OR to the off-site location.) Students are to remain with assigned teacher. Evacuate all buildings immediately. This is **NOT** a drill.”

– REPEAT –

- When able, alert Superintendent’s office
- Access the “Emergency Response Box” (p. 11) in order to provide fire officials and/or law enforcement with maps, rosters, etc.
- Put on emergency IC/Admin vest and continue as Incident Commander until relieved by fire officials or law enforcement
- Meet fire officials or Law enforcement at Incident Command Post
- Collect attendance and notify fire officials or Law enforcement of any missing persons
- If incident includes casualties, deploy (School) Liaison Officer to First Responder’s Emergency Medical Command Post. After proper identification, only Coroner, police chaplain, or other public official should deliver official notification of deceased persons
- Transfer incident command to fire officials or Law enforcement but provide whatever assistance/information they require. School Incident Commander remains part of the ICS Unified Command and is expected to serve at Incident Command Post through duration of event
- When cleared to return to the buildings, announce **ALL CLEAR** and oversee a safe return to classroom and normal school activities

EVACUATION



SITE ADMINISTRATOR ACTIONS *(continued)*:

- If site is designated unsafe to return, initiate **STUDENT RELEASE** procedures
- Through whatever means is most effective, provide parents/guardians with a brief description of the emergency, the school's response, and what steps are being taken to ensure safety of students and staff

STAFF ACTIONS:

- Prepare students to leave all belongings and calmly exit the building
- Gather emergency supplies/materials (Go Bag, p. 42) including the student roster for current class and that of "Buddy Teacher" (p. 43)
- Remove staff ID placard from emergency materials and put it on
- Ensure that the door is closed, but unlocked
- Check with "Buddy Teacher(s)" to determine each other's health status, need to assist with injuries, need to stay with injured students, responsibility to ICS duty, etc.
- If necessary, one "Buddy Teacher" will evacuate both classrooms
- Take care to ensure the safety and address the unique needs of students or staff with disabilities according to site protocol
- Students and staff may remove masks while outside.
- Emphasize that the class stay together en route to the Evacuation Assembly Area
- Use the designated evacuation routes and reassemble in the assigned Evacuation Assembly Area
- According to site protocol, take attendance once class is safely in assembly location
- According to site protocol, report missing students
- Remain in the Evacuation Assembly Area until further instruction
- Wait for another action or, if **ALL CLEAR** announcement is issued, return to school buildings and normal class routine

FIRST AID: TRIAGE

First Aid response is an important part of any emergency response plan and should be developed in cooperation with partner agencies including local Emergency Medical Services, local hospitals, and the health department. All employees should be trained, and staff roles should be clearly defined and integrated into the site's written plan.

THE BASICS OF FIRST AID RESPONSE:

- Remain calm and assess the situation
- Be sure the situation is safe for the responder
- In the case of serious injury involving difficulty breathing, loss of consciousness, uncontrolled bleeding, head injury, or possible poisoning, call **911** immediately
- Do NOT move a severely injured or ill person unless absolutely necessary for immediate safety
- If moving is necessary, protect the neck by keeping it straight to prevent further injury

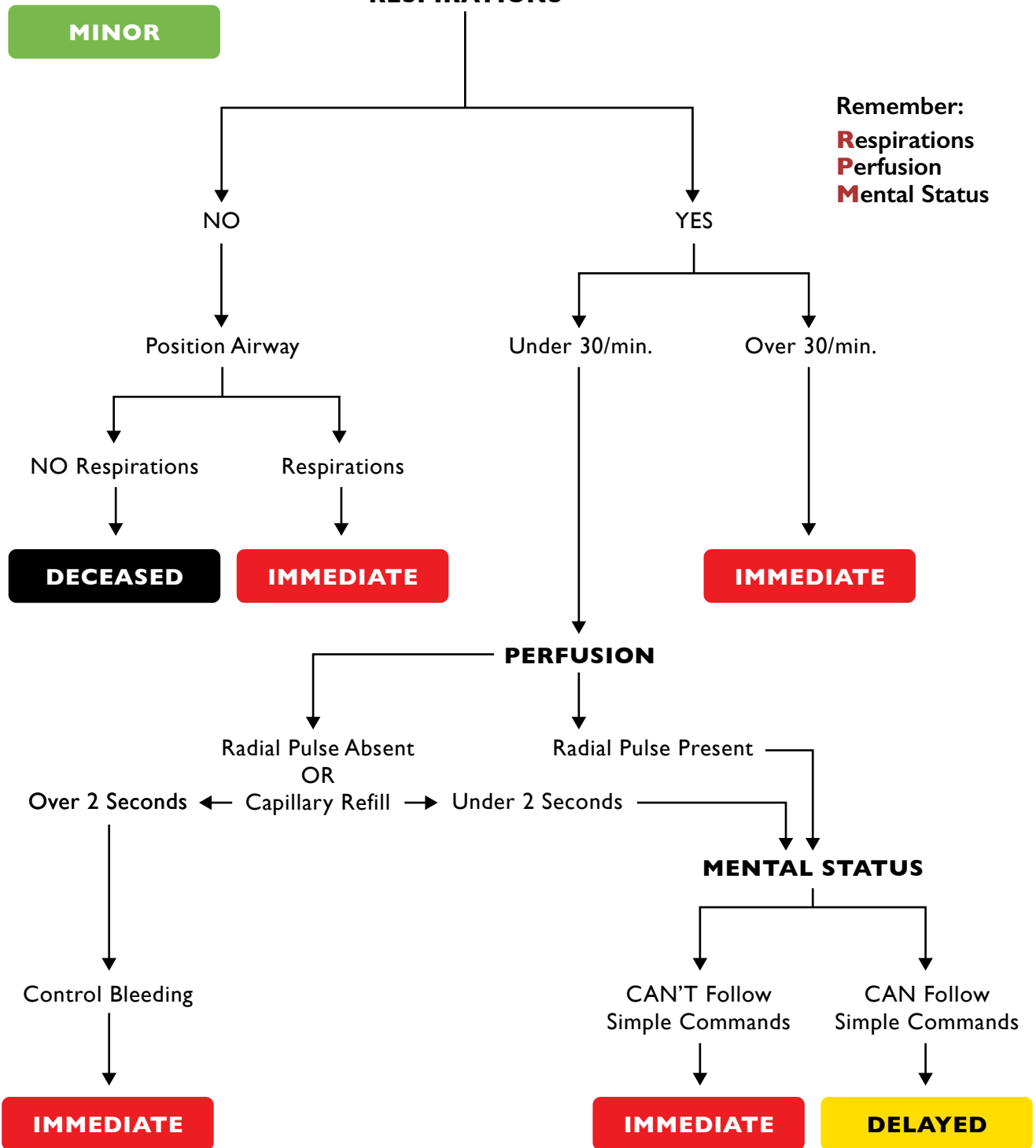
RECOMMENDED FIRST AID EQUIPMENT AND SUPPLIES FOR SCHOOLS:

1. Portable stretcher and cot with waterproof cover
2. Ten Triage Tags
3. Blankets, sheets/pillows/pillow cases (disposable covers are suitable)
4. Wash cloths, hand towels, and small portable basin
5. Covered waste receptacle with disposable liners
6. Bandage scissors, tweezers
7. Disposable thermometer
8. Pocket mask/face shield for CPR
9. Disposable latex free gloves
10. Cotton-tipped applicators, individually packaged
11. Assorted adhesive bandages (1" x 3")
12. Gauze squares (2" x 2"; 4" x 4"), individually packaged
13. Trauma Pads (5" x 9")
14. Adhesive tape (1" width)
15. Gauze bandage (2" and 4" widths) rolls
16. Ace bandage (2" and 4" widths)
17. Splints (long and short)
18. Quick clot dressing
19. Cold packs
20. Triangular bandages for sling and safety pins
21. Tongue blades
22. Disposable facial tissues, paper towels, sanitary napkins
23. One flashlight with spare bulb and batteries

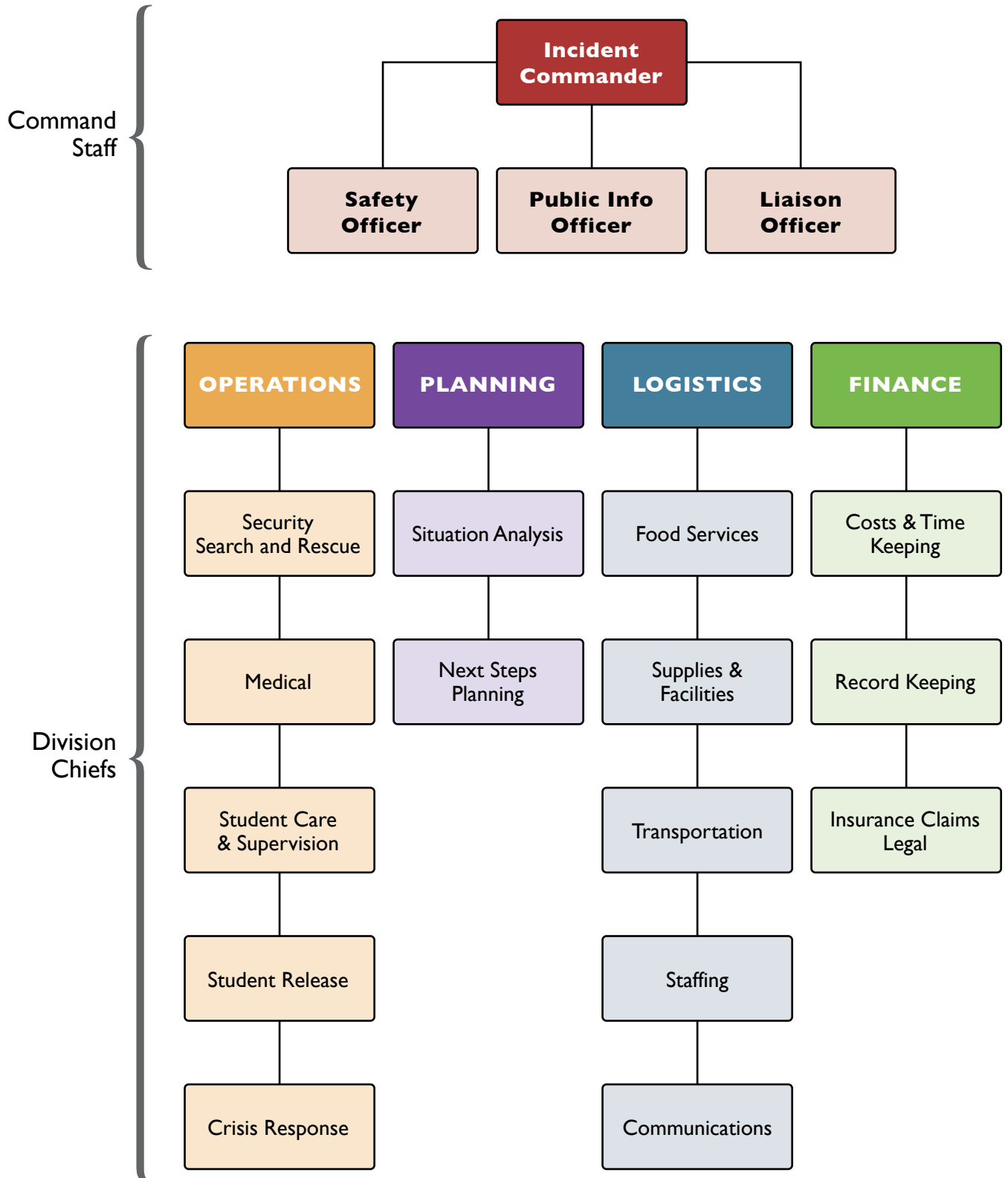
FIRST AID: TRIAGE

In **TRIAGE**, patients are classified with a color tag to indicate the level of urgency. Those colors are displayed in this diagram.

All Walking Wounded



SCHOOL INCIDENT COMMAND CHART



SCHOOL INCIDENT COMMAND FORM

THREE-DEEP ASSIGNMENTS

Refer to the chart on the preceding page and choose three qualified delegates for each position. In the event the first individual is not available during an emergency, the responsibility will fall to the second person listed. If the second person is also unavailable, the third will fill the role. An individual may be listed more than once, but within reasonable limits.

COMMAND STAFF

Incident Commander:

Safety Officer:

Public Information Officer:

Liaison Officer:

OPERATIONS

Security/Search and Rescue:

Medical:

Student Care & Supervision:

Student Release:

Crisis Response:

SCHOOL INCIDENT COMMAND FORM

PLANNING

Situation Analysis:

Next Steps Planning:

LOGISTICS

Food Services:

Supplies & Facilities:

Transportation:

Staffing:

Communications:

FINANCE

Costs & Time Keeping:

Record Keeping:

Insurance Claims/Legal:

GO BAG

Each classroom should maintain an up-to-date Go Pack. Each teacher is responsible to monitor the contents of their classroom's Go Pack and to obtain any materials that need replacing or updating. While other appropriate items might be included, each Go Pack must contain the following:

#	Item	Verified (Date)	Verified (by Whom)
1	Updated Class Lists		
2	"Buddy" Class Lists		
3	In-Room Attendance Forms		
4	Evacuation Attendance Forms		
5	Staff ID Placard		
6	Teacher Name Sign		
7	Evacuation Routes Map		
8	Red Cross Placard		
9	Pens/Pencils		
10			
11			
12			

BUDDY TEACHER LIST

Use the chart below to assign Buddy Teachers for emergency evacuation purposes. Each teacher is responsible for assisting the Buddy Teacher's class evacuate should the need arise. The classroom Go Pack should contain current rosters for both classrooms.

BUDDY TEACHER ASSIGNMENTS

#	Teacher	Room No.	Teacher	Room No.
1				
2				
3				
4				
5				
6				
7				
8				
9				
10				
11				
12				
13				
14				
15				
16				
17				
18				
19				
20				

THE BIG FIVE SUPPLEMENTAL RESOURCES

Big Five Planning Calendar: Administrator planning tool to map out action steps for the school year and to plan drills for the school year.

https://www.smcoe.org/assets/files/For%20Schools_FIL/Safe%20and%20Supportive%20Schools_FIL/School%20Safety_FIL/Emergency_Planning_Calendar_190830.pdf

Decision Making Guide for School Closure: A tool to help administrators determine when it is appropriate to close a school site and when it is safe to continue operation of school during wildfire, power outages and/or smoke days.

https://www.smcoe.org/assets/files/For%20Schools_FIL/Safe%20and%20Supportive%20Schools_FIL/School%20Safety_FIL/Decision_Making_Guide_for_School_Closure.pdf

Emergency Communications Guide and Template: Intended to be a companion document to the Big Five Administrators Packet.

<https://www.smcoe.org/emergencycommunication> (Word .docx)

Facilities Report: A comprehensive approach to facilities safety and management, best practices in facility safety and a hazard mitigation and school safety checklist.

https://www.smcoe.org/assets/files/For%20Schools_FIL/Safe%20and%20Supportive%20Schools_FIL/School%20Safety_FIL/Coalition_For_Safe_Schools_Facilities_Report-190808.pdf

Fire Watch: Information and guidance on how to protect school sites when surrounding areas are being threatened by fire.

https://www.smcoe.org/assets/files/For%20Schools_FIL/Safe%20and%20Supportive%20Schools_FIL/School%20Safety_FIL/Fire_Watch_flyer.pdf

Guidance Concerning Air Quality: Document for distribution to families and staff that includes access to information to help track air quality and prepare families for days when air quality is not good.

https://www.smcoe.org/assets/files/For%20Schools_FIL/Safe%20and%20Supportive%20Schools_FIL/School%20Safety_FIL/Air_Quality_Guidance.pdf

Hazard Response: For Immediate Action Responses to Chemical Spills, Fires on and off campus, power outages and poor air quality.

https://www.smcoe.org/assets/files/For%20Schools_FIL/Safe%20and%20Supportive%20Schools_FIL/School%20Safety_FIL/Coalition_For_Safe_Schools_Hazard_Responses-190808.pdf

School Air Quality Recommendations: Specific instructions and guidance regarding outdoor activity for schools and school related programs to follow activity during poor air quality days.

https://www.smcoe.org/assets/files/For%20Schools_FIL/Safe%20and%20Supportive%20Schools_FIL/School%20Safety_FIL/air_quality_guidance_table.pdf

THE BIG FIVE SUPPLEMENTAL RESOURCES

Survey of Staff Skills: To help administrators identify specific skill sets staff hold that may be useful during an emergency.

https://www.smcoe.org/assets/files/For%20Schools_FIL/Safe%20and%20Supportive%20Schools_FIL/School%20Safety_FIL/Survey_of_Staff_Skills_190830.pdf